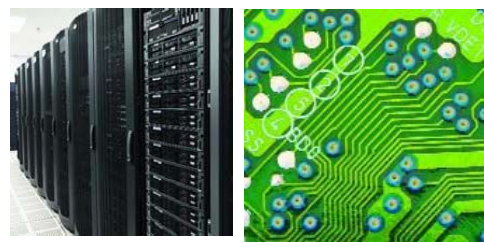


Contamination Control Access Floor Tiles



IT Cleaning limited have developed **ITDecom** Tiles with Dycem which provide a direct replacement to Tak Mats. **ITDecom** Tiles are almost four times more efficient and require less maintenance.



Studies have shown that around 75% of Hardware failure is caused by dirt. One hour of downtime can cost an average of £300,000 an hour. In comparison to these figures, the cost of preventative maintenance is miniscule (Source: IBM Today).

Dust can cause irreversible harm to computer systems by clogging heat-sinks and cooling systems leading to overheating and induce a major risk of fire hazard. Without protection from dust, there is a huge risk of data loss and hardware failure in data centres.

ITDecom tiles use a Dycem coating to actively remove particulate (dust) from feet, wheels and anything else that comes into contact with the surface. Utilising Van De- Waals force the dust is attracted to the surface and then held there. These tiles are not sticky unlike Tack Mats. They are big enough for a person to take 3 or 4 steps on, do not require any peeling and are unavoidable, again unlike Tack Mats. ITDecom tiles are made to the same specification as your existing tiles.

80% of dust and dirt entering your critical area does so on feet (Source: 3M).

ITDecom Tiles prevent over 99% of dust and dirt entering into an area at or near floor level.

ITDecom Tiles provides significant benefits to your business:

- Extended lifespan of equipment.
- Reduced data loss and read/write errors.
- Reduced maintenance cost.
- Improved reliability of your facilities.

Some of our clients include Barclays, Orange, GCHQ, Royal Bank of Scotland, British Airways and Vodafone.

"**ITDecom** Tiles dramatically reduce the levels of dust from IT server rooms. IT cleaning have also found that although **ITDecom** Tiles have to be cleaned on a regular basis their effect is to reduce the quarterly cleans to half yearly, enabling you to reduce your cleaning and maintenance costs."

Stephen Yates IT Cleaning

Use **ITDecom** Tiles at:

- At all entrances and exits to critical environments either directly onto the floor substrate or on individual raised access tiles.
- Inside the critical areas to reduce the amount of airborne particulates.

Cleaning Frequency & Cost

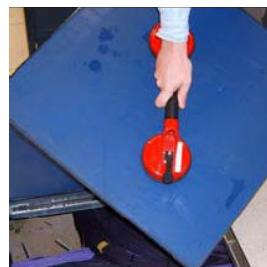
The frequency of room cleaning depends on a number of factors including the external environment. According to the British Standard BS7083, "the accommodation & operating environment for IT equipment in all 'Type A' IT rooms should be cleaned every three months."



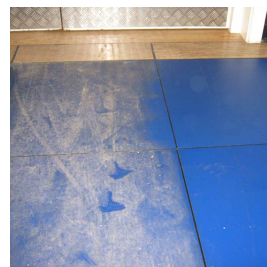
ITDecom Tiles installed in Royal Bank of Scotland Data Centre.



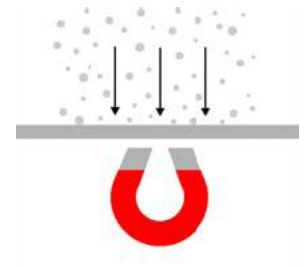
ITDecom Tiles installed in New Look's server room.



ITDecom Tiles can replace individual access floor tiles.



The dirt collected by contractors working in Tesco's Data Centre.



Short range electromagnetic forces (Van der Waals) enable the Dycem layer to attract, collect and retain over 99% of particles.